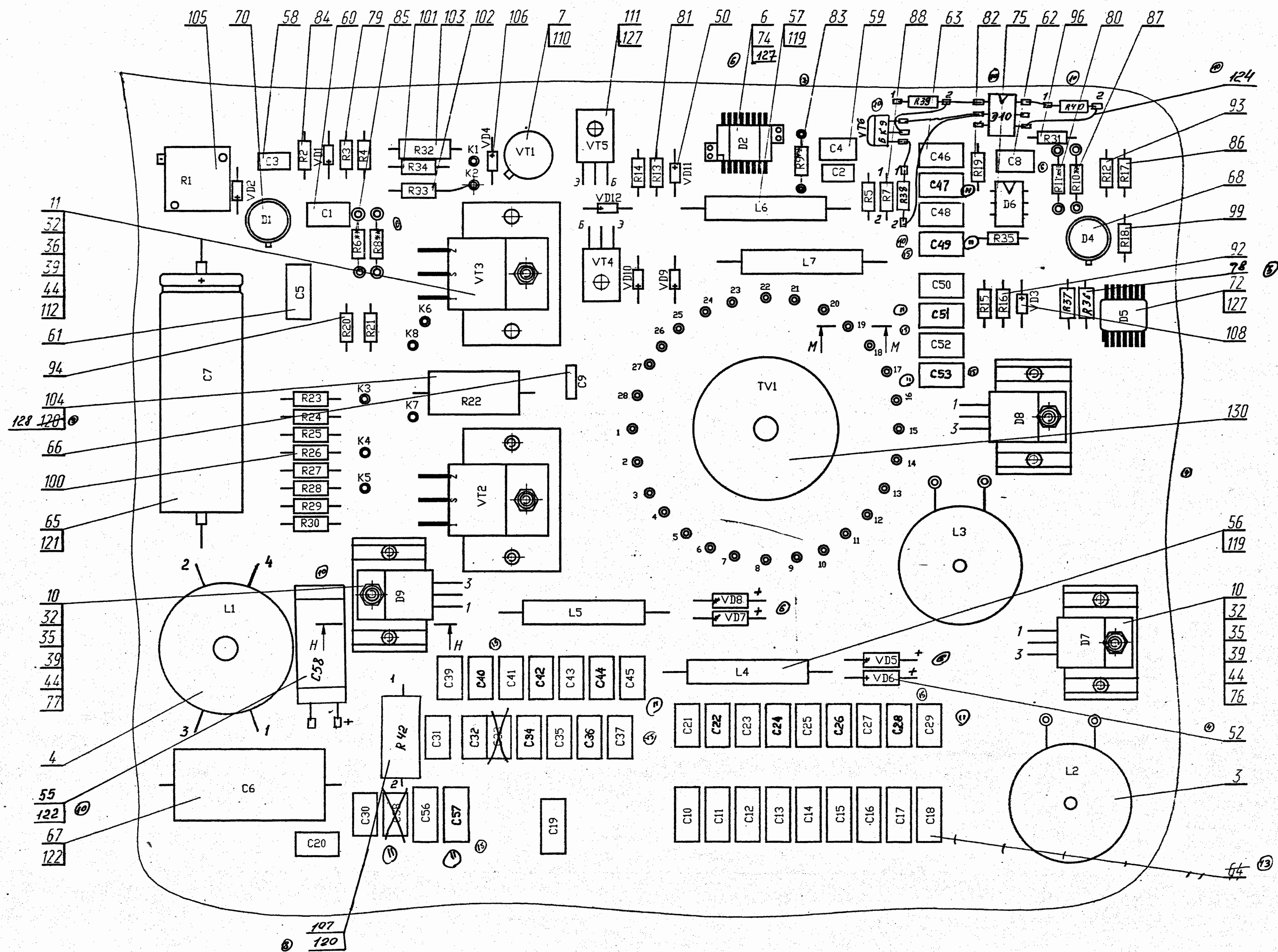
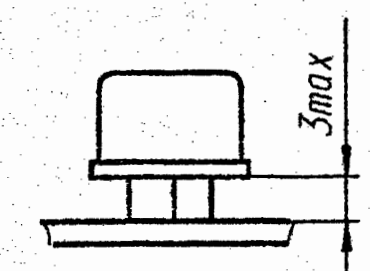


K(2:1) (1)

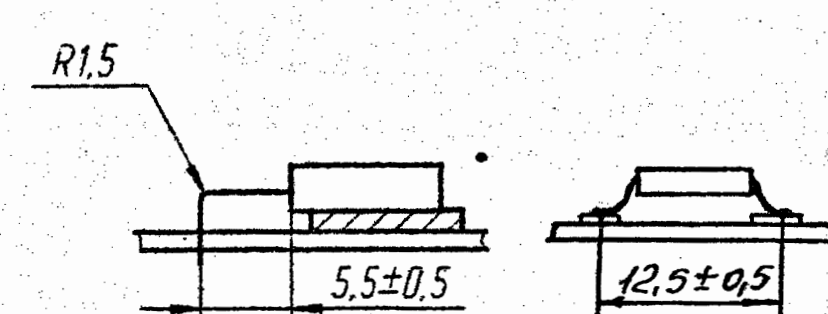


Формовка и установка элементов

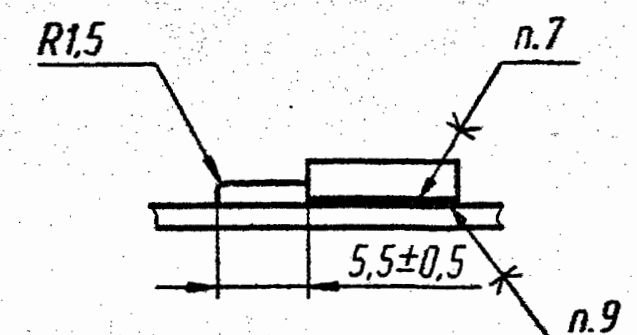
поз.68,70



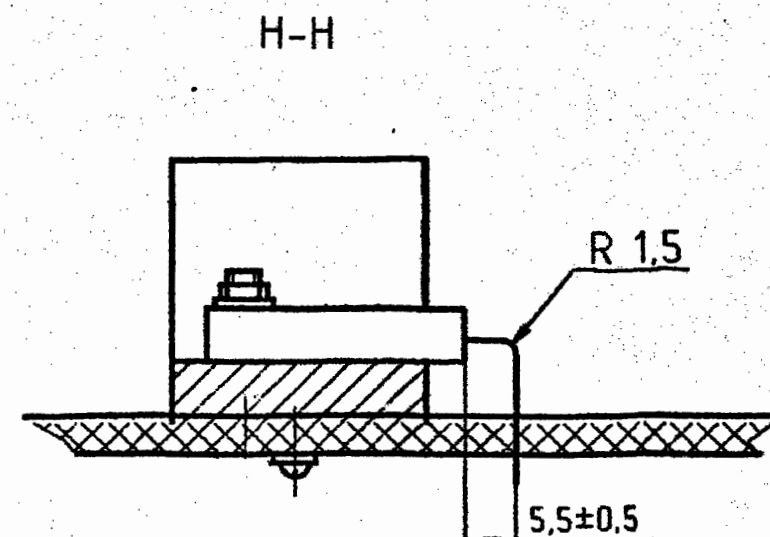
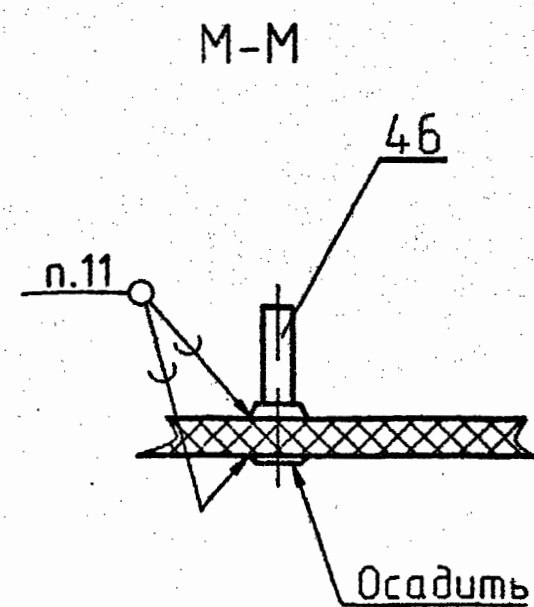
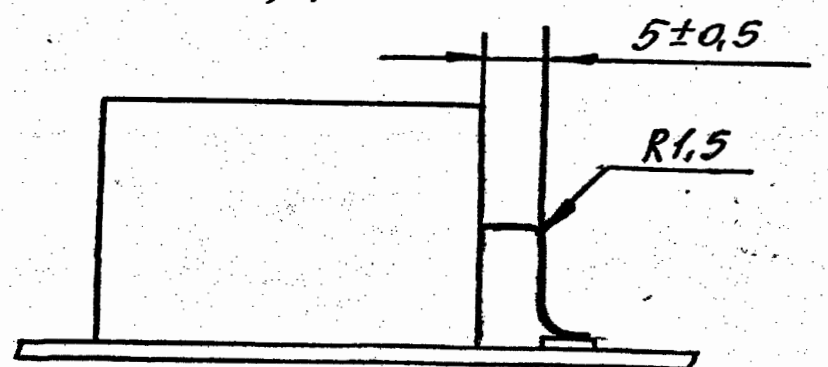
поз.76,112



поз.111



поз.55



14-802-15-389 3/4 22.8.98 8-802-15-75 22.8.98
15-802-15-391 1/2 22.8.98 7-802-15-115 1/4 22.8.98
13-802-15-240 1/2 22.8.98 6-802-15-77 1/8 22.8.98
11-802-15-214 1/4 22.8.98 5-802-15-72 1/8 22.8.98
10-802-15-154 1/4 22.8.98 4-802-15-71 1/8 22.8.98
9-802-15-140 1/4 22.8.98 3-802-15-70 1/8 22.8.98